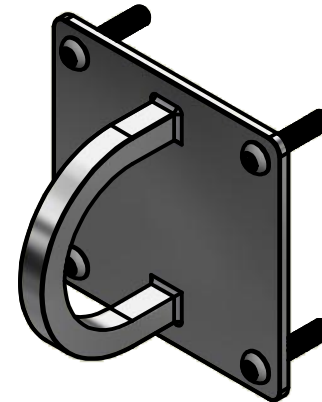
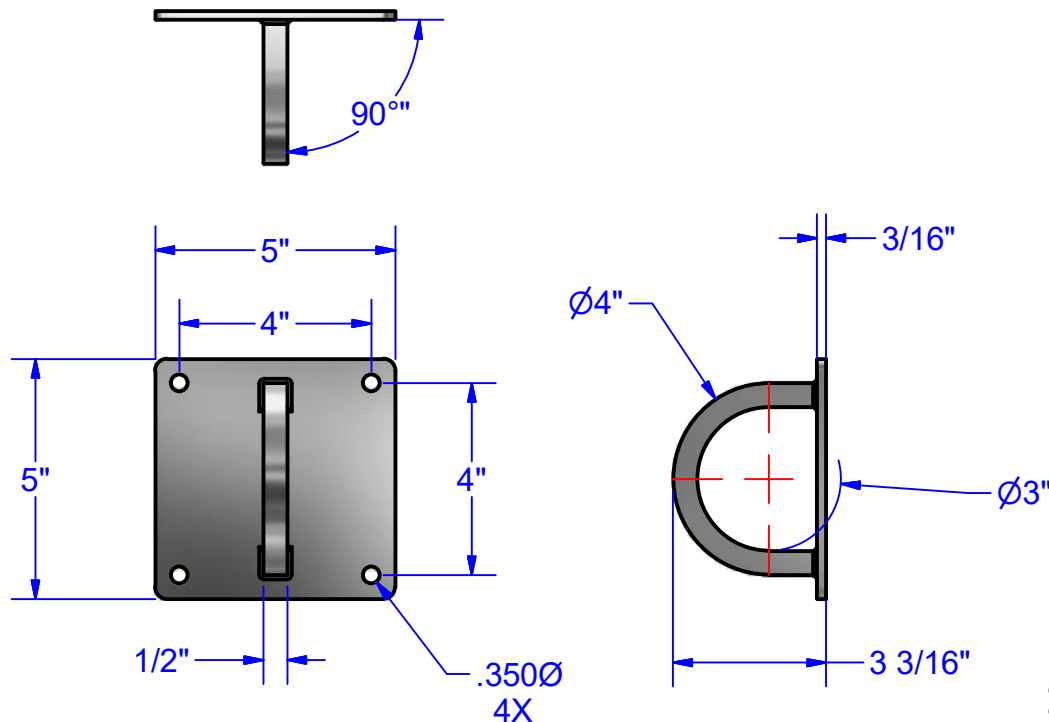




# Technical Data Sheet

S-4097-SS

Surface Mount Handcuff Ring



CONSULT LOCAL AND NATIONAL ACCESSIBILITY CODES FOR PROPER INSTALLATION GUIDELINES.  
 CONFORMITY AND COMPLIANCE TO LOCAL AND NATIONAL CODES IS THE RESPONSIBILITY OF THE INSTALLER.  
 SPECIFICALLY ENGINEERED TAMPER RESISTANT SECURITY SEALANT MUST BE USED ON ALL FLANGE/ WALL JOINTS.  
 HANDCUFF RING ARE ONLY AS STRONG AS THE ANCHORING DEVICES AND THE SURFACE ON WHICH IT IS MOUNTED TO.

## Construction:

Plate:  $\frac{3}{16}$ " thick type 304 stainless steel with (4) .3500 mounting holes.

Handcuff ring:  $\frac{1}{2}$ " thick type 304 stainless steel. Welded to plate.

Screws:  $\frac{5}{16}$ "-18 X  $1\frac{1}{2}$ " long stainless steel pin in torx machine screws.

Finish: satin #4

## Installation:

Secure handcuff ring where adequate backing exists. Use handcuff ring as a template to locate mounting holes. Drill holes and mount handcuff ring.

(4)  $\frac{5}{16}$ "-18 X  $1\frac{1}{2}$ " pin in torx machine screws supplied. Drive size is T40 .Anchors are not included.

## Guide specification:

Surface mount single handcuff ring.  
 Type 304 stainless steel.  
 Satin #4 finish.