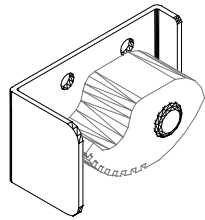
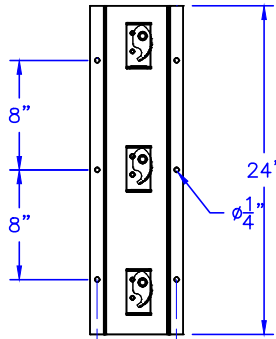
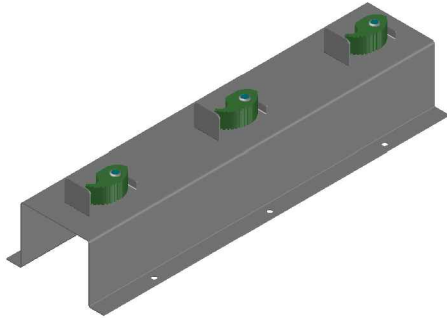


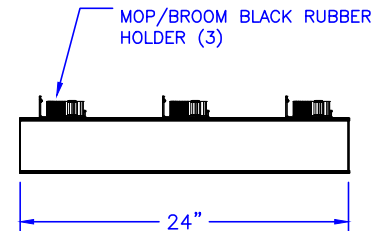
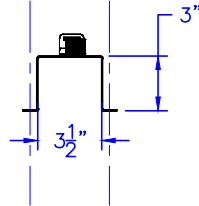


# Technical Data K-1001-24-SS

## 24" MOP AND BROOM HOLDER



RUBBER SPRING ACTION  
TOOL HOLDER.  
7/8" TO 1 1/4" Ø DIAMETER TOOL RANGE.



### Construction:

- 18 GAUGE TYPE 304 STAINLESS STEEL CHANNEL FORMED ONE PIECE. (6) 1/4" Ø MOUNTING HOLES PROVIDED.
- (3) RUBBER SPRING ACTION TOOL HOLDERS SPOT WELDED TO CHANNEL. 7/8" TO 1 1/4" Ø TOOL RANGE.
- SATIN #4 FINISH

### Operation:

RUBBER SPRING ACTION TOOL HOLDER USE THE WEIGHT OF THE TOOL TO PRODUCE A SECURE GRIP. PUSH THE TOOL UP AND OUT TO REMOVE TOOL.

### Installation:

USE CHANNEL AS TEMPLATE TO MARK LOCATION OF HOLES. DRILL HOLES AND FASTEN TO WALL.

CAUTION: UNIT IS ONLY AS STRONG AS THE ANCHORING DEVICES AND THE WALL ON WHICH IT IS MOUNTED TO.

### Guide Specification:

24" LONG JANITORIAL TOOL HOLDER.  
(3) RUBBER SPRING ACTION HOLDERS WITH 7/8" TO 1 1/4" Ø TOOL RANGE.  
ONE PIECE CHANNEL DESIGN FROM TYPE 304 STAINLESS STEEL.