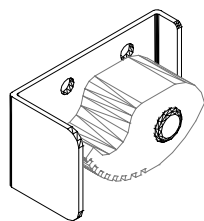
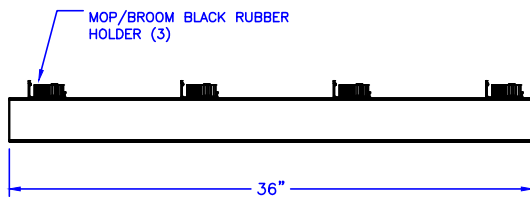
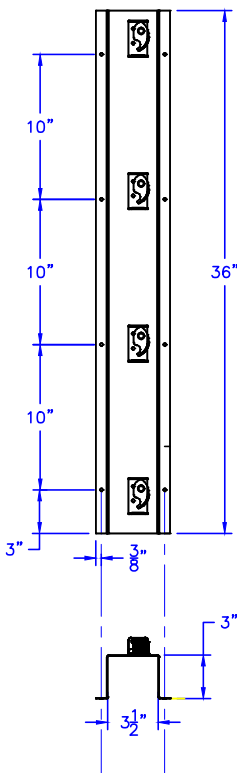
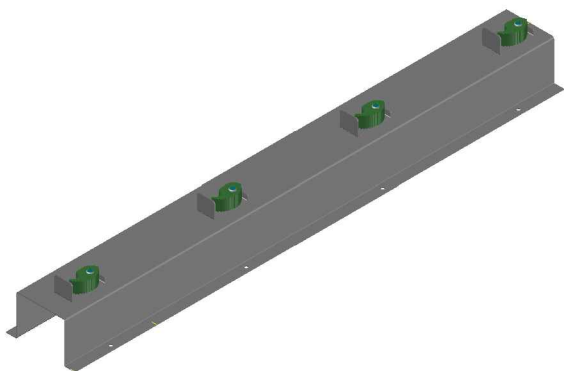




Technical Data K-1002-36-SS

36" MOP AND BROOM HOLDER



RUBBER SPRING ACTION
TOOL HOLDER.
5/8" TO 1 1/4" Ø DIAMETER TOOL RANGE.

Construction:

- 18 GAUGE TYPE 304 STAINLESS STEEL CHANNEL FORMED ONE PIECE. (8) 1/4" Ø MOUNTING HOLES PROVIDED.
- (4) RUBBER SPRING ACTION TOOL HOLDERS SPOT WELDED TO CHANNEL. 5/8" TO 1 1/4" Ø TOOL RANGE.
- SATIN #4 FINISH

Operation:

RUBBER SPRING ACTION TOOL HOLDER USE THE WEIGHT OF THE TOOL TO PRODUCE A SECURE GRIP. PUSH THE TOOL UP AND OUT TO REMOVE TOOL.

Installation:

USE CHANNEL AS TEMPLATE TO MARK LOCATION OF HOLES. DRILL HOLES AND FASTEN TO WALL.

CAUTION: UNIT IS ONLY AS STRONG AS THE ANCHORING DEVICES AND THE WALL ON WHICH IT IS MOUNTED TO.

Guide Specification:

36" LONG JANITORIAL TOOL HOLDER.
(4) RUBBER SPRING ACTION HOLDERS WITH 5/8" TO 1 1/4" Ø TOOL RANGE.
ONE PIECE CHANNEL DESIGN FROM TYPE 304 STAINLESS STEEL.